

6/4

T
A
B

6/4

3 5 7 3 5 7 4 6 8 4 6 8

Detailed description: This image shows a musical score for guitar. The top staff is a treble clef with a 6/4 time signature. The melody consists of two measures. The first measure contains six quarter notes: G2, A2, B2, C3, D3, and E3. The second measure contains six quarter notes: F3, G3, A3, B3, C4, and D4. The bottom staff is a guitar tab with a 6/4 time signature. It shows the fret numbers for each note: 3, 5, 7, 3, 5, 7 in the first measure, and 4, 6, 8, 4, 6, 8 in the second measure. Vertical lines connect the notes between the two staves.

6/4

1st Hexatonic

2nd Hexatonic

T
A
B

6/4

3 5 7 3 5 7 4 6 8 4 6 8

Detailed description: This image is similar to the first one but includes annotations. Red brackets are drawn under the first six notes of each measure in the treble clef staff. The first bracket is labeled "1st Hexatonic" in blue text, and the second bracket is labeled "2nd Hexatonic" in blue text. The guitar tab and time signature remain the same as in the first image.

Tone Row

Musical notation for a tone row. The top staff is in treble clef with a key signature of one flat (B-flat). The bottom staff is in bass clef. The melody consists of two measures. The first measure contains the notes G4, A4, B4, C5, B4, A4, G4. The second measure contains the notes F4, E4, D4, C4, B3, A3, G3. Red brackets are drawn under the notes in both measures, spanning the entire length of each measure.

Tone Row

Musical notation for a tone row, identical to the first image. The top staff is in treble clef with a key signature of one flat (B-flat). The bottom staff is in bass clef. The melody consists of two measures. The first measure contains the notes G4, A4, B4, C5, B4, A4, G4. The second measure contains the notes F4, E4, D4, C4, B3, A3, G3. Orange circles are drawn around the first three notes of each measure (G4-A4-B4 and F4-E4-D4). The word "tri-chord" is written in blue text below each of these circles. Red brackets are drawn under the notes in both measures, spanning the entire length of each measure.



1 2 3

1 2

6 6 6 4 6 4

1 2

4 8 9 11 9 0

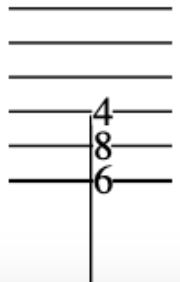
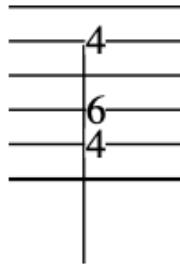
The image displays a musical score for guitar, consisting of two staves. The upper staff is a treble clef staff with a treble clef symbol and a common time signature (C). It contains a melodic line. The first part of the line is a descending eighth-note run: G4 (quarter), F#4 (quarter), E4 (quarter), D4 (quarter), C4 (quarter), B3 (quarter), A3 (quarter), G3 (quarter). This is followed by a rising eighth-note run: G3 (quarter), A3 (quarter), B3 (quarter), C4 (quarter), D4 (quarter), E4 (quarter), F#4 (quarter), G4 (quarter). The lower staff is a guitar tablature (TAB) staff, labeled 'TAB' vertically on the left. It shows fret numbers for each note: 12, 10, 9, 0, 11, 11, 12, 14. The first four frets (12, 10, 9, 0) are connected by a horizontal line, and the last four frets (11, 11, 12, 14) are also connected by a horizontal line. Vertical lines connect the fret numbers to the corresponding strings on the guitar neck.

A musical score for guitar, consisting of a standard staff with a treble clef and a guitar tablature staff below it. The tablature staff is labeled 'TAB' and contains fret numbers: 9, 10, 7, 10, 7, 7, 6, 4, 6, 3, 9, 8. A red bracket is drawn across the score, starting from the first measure and extending to the end of the second measure, highlighting the first two measures of the piece.

A diagram of a guitar fretboard showing a double stop on the 7th fret. Two notes are indicated by circles on the 7th fret of the 4th and 5th strings.

A diagram of a guitar fretboard showing a double stop on the 5th fret. Two notes are indicated by circles on the 5th fret of the 4th and 5th strings.

A diagram of a guitar fretboard showing a double stop on the 7th fret. Two notes are indicated by circles on the 7th fret of the 4th and 5th strings.



8

T
A
B

9 10 7 10 7 7

6 4 6 3 9 8