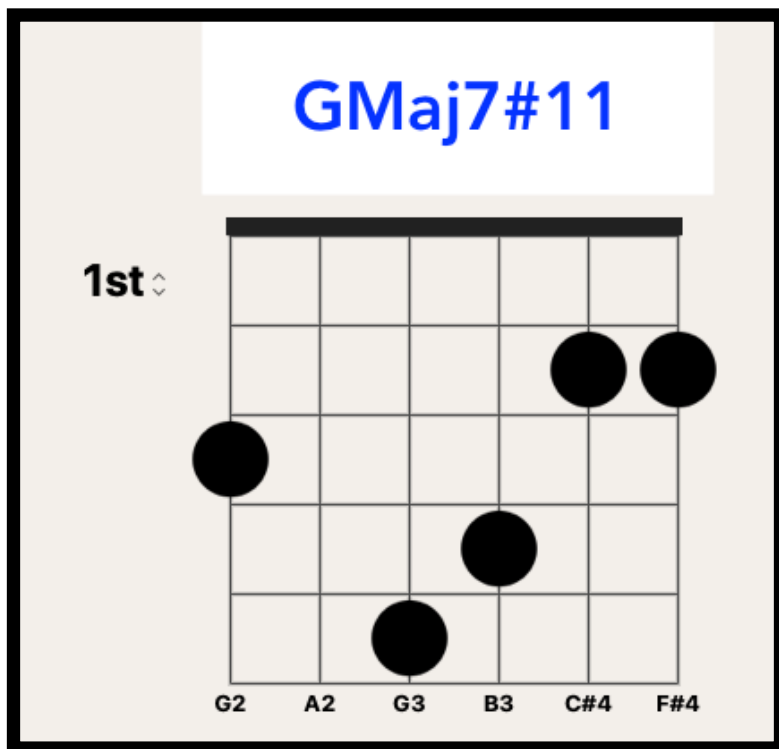
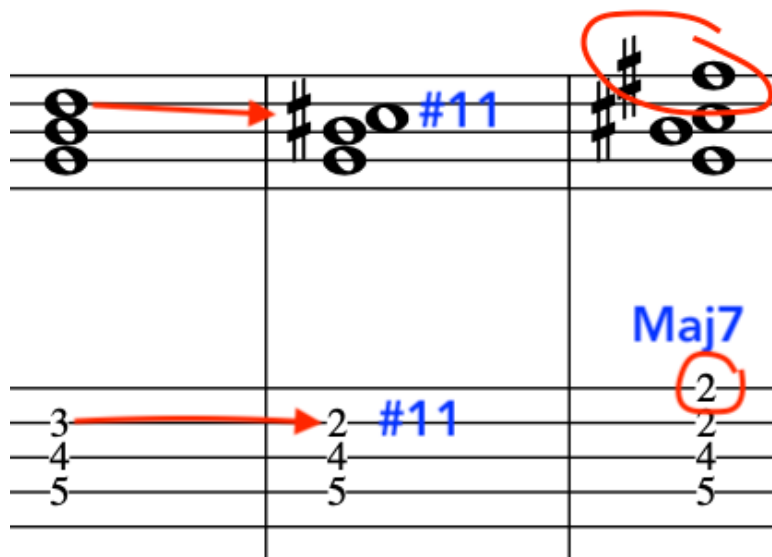


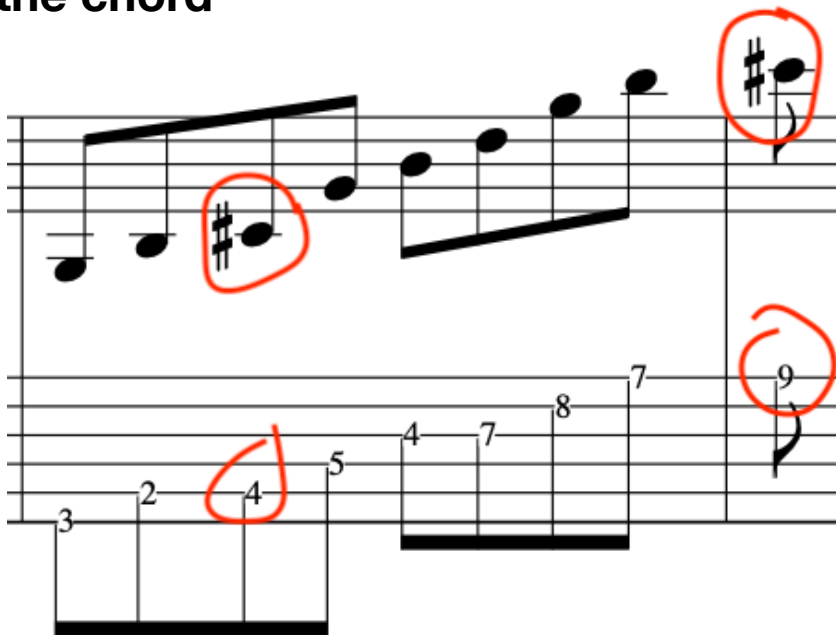
JOHN MCLAUGHLIN'S GMaj7#11 Chord-Explorations



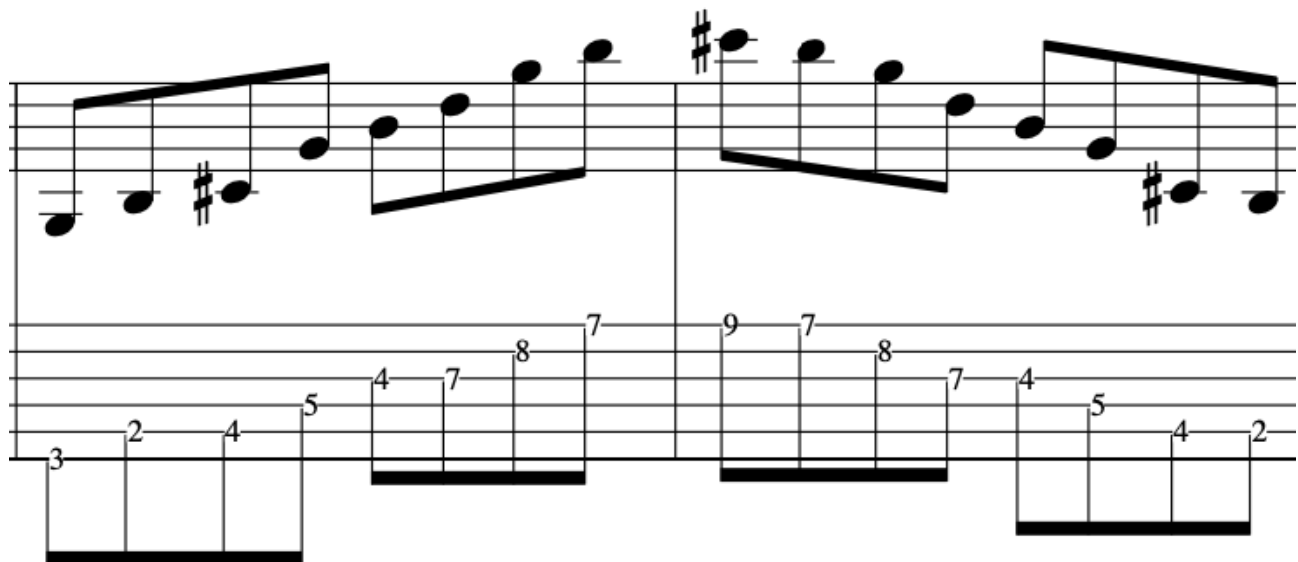
How the chord is Formed



Arpeggio shape outlining the chord



Ascending and Descending



G Lydian Mode

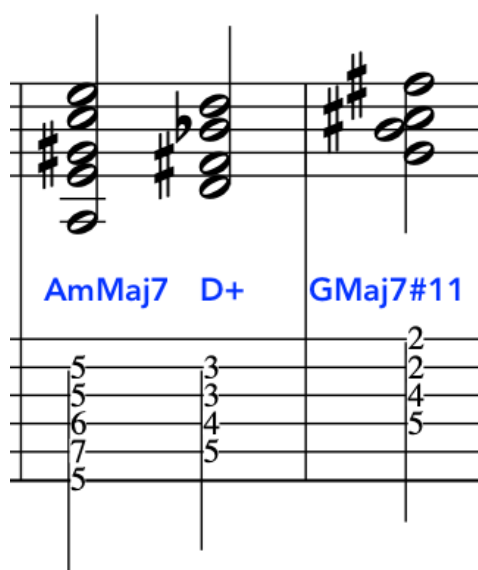
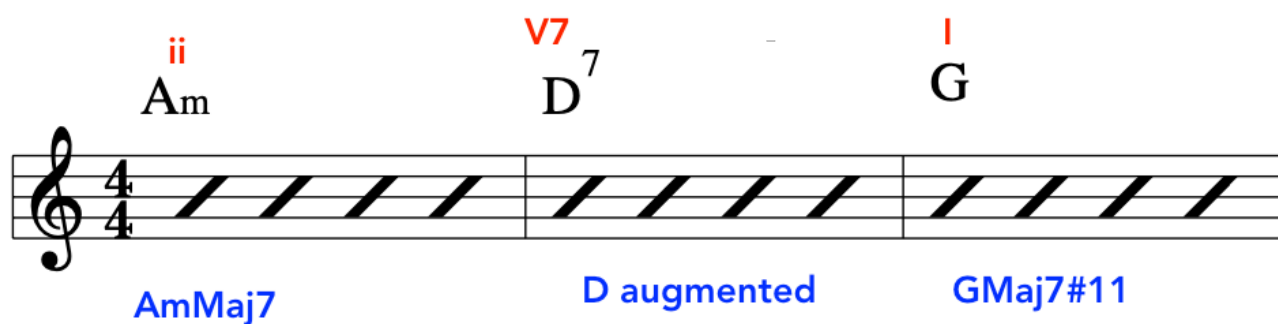
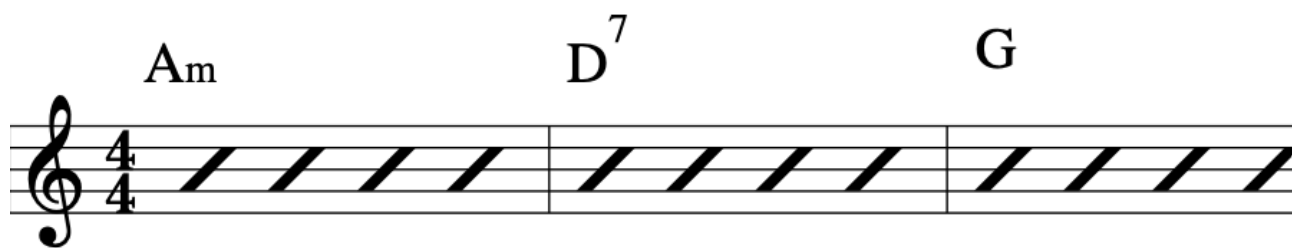
The image shows the G Lydian Mode scale in both treble and guitar TAB notation. The treble staff starts with a treble clef and a key signature of one sharp (F#). The scale is written as a sequence of eighth notes: G4, A4, B4, C#5, D5, E5, F#5, G5. The guitar TAB staff shows the fret numbers for each note: 3, 5, 7, 4, 5, 7, 4, 5. Two red ovals highlight specific notes: the first oval encircles the C#5 note (TAB 4) and is labeled "#11" in blue; the second oval encircles the F#5 note (TAB 4) and is labeled "Leading note" in blue.

G Lydian Mode played as a

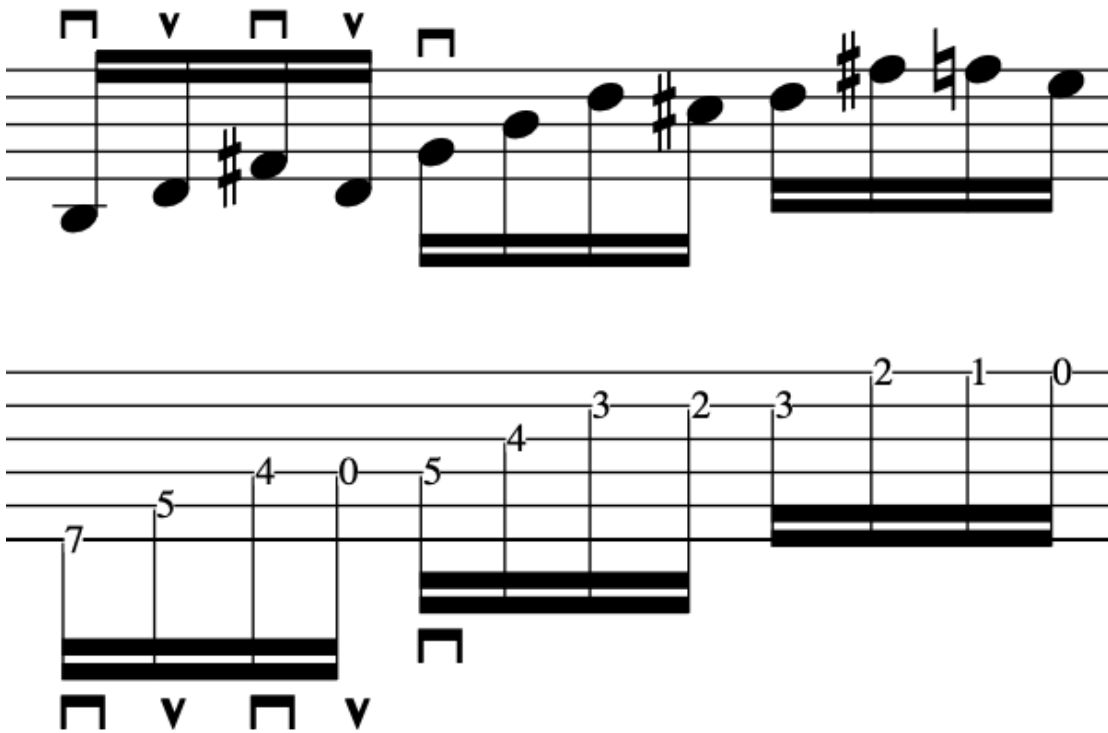
GMaj7#11 PHRASE Example

The image shows a musical phrase for GMaj7#11 in both treble and guitar TAB notation. The treble staff features a sequence of notes: G4, A4, B4, C#5, D5, E5, F#5, G5. The guitar TAB staff shows the fret numbers for each note: 7, 5, 3, 5, 3, 6, 4, 5, 4, 5, 4, 5, 3, 2, 0, 4. Two red ovals highlight specific notes: the first oval encircles the C#5 note (TAB 3) and the second oval encircles the F#5 note (TAB 4).

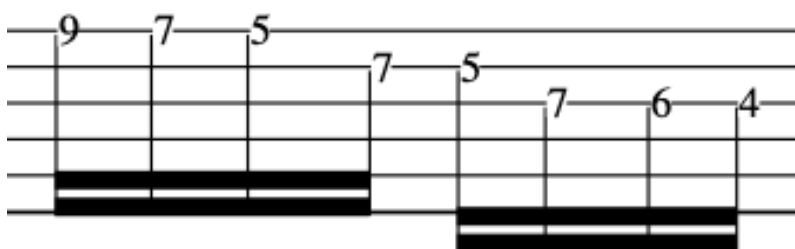
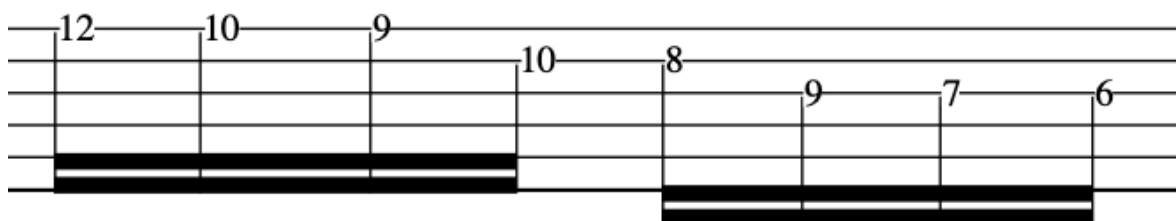
ii V7 I Substitutions

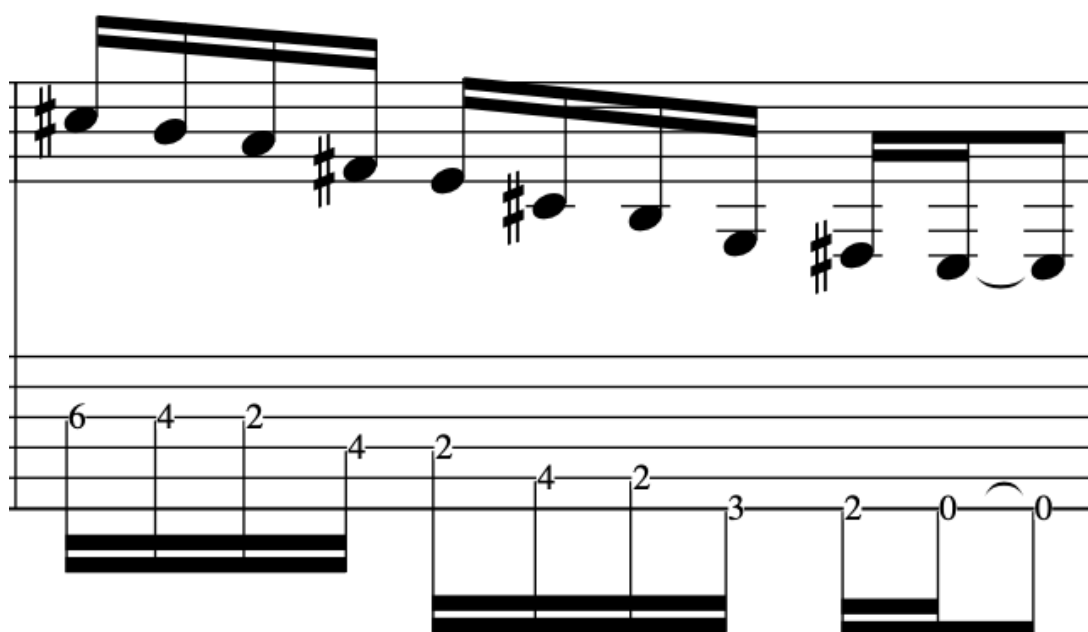


INTRO Lick Part 1-Arpeggios and simple chromatic movement



Part 2 -Scale Fragments





CHORD VOICING'S Inversions/Bass

Three chords in G major are shown, each with a treble and bass staff. Fingerings are indicated by numbers 1-4.

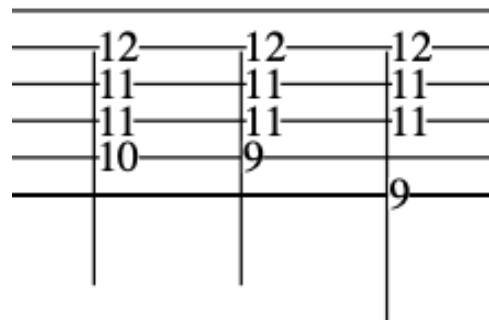
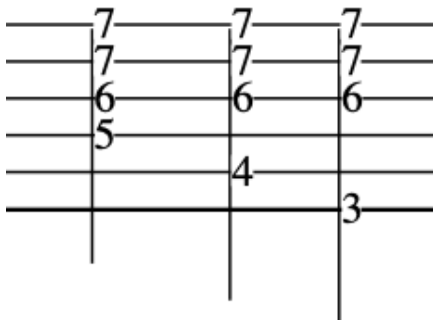
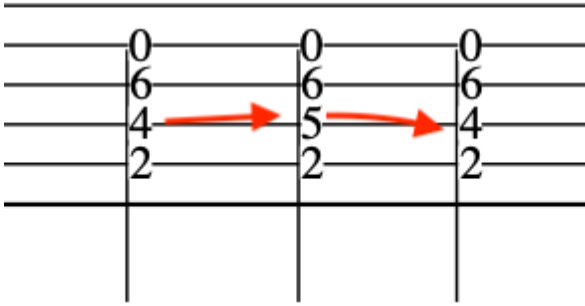
Chord	Treble Staff Notes	Bass Staff Notes
G ⁴	G ⁴ (1), B ⁴ (2), D ⁵ (3), E ⁵ (4)	G ² (1), B ² (2), D ³ (3), E ³ (4)
G ³	B ⁴ (1), D ⁵ (2), E ⁵ (3)	G ² (1), B ² (2), D ³ (3)
G ²	B ⁴ (1), D ⁵ (2), E ⁵ (3)	G ² (1), B ² (2), D ³ (3)

Two chords in G major are shown, each with a treble and bass staff. Fingerings are indicated by numbers 1-4. The bass line for the second chord (G³) is circled in red.

Chord	Treble Staff Notes	Bass Staff Notes
G ⁴	G ⁴ (1), B ⁴ (2), D ⁵ (3), E ⁵ (4)	G ² (1), B ² (2), D ³ (3), E ³ (4)
G ³	B ⁴ (1), D ⁵ (2), E ⁵ (3)	G ² (1), B ² (2), D ³ (3)

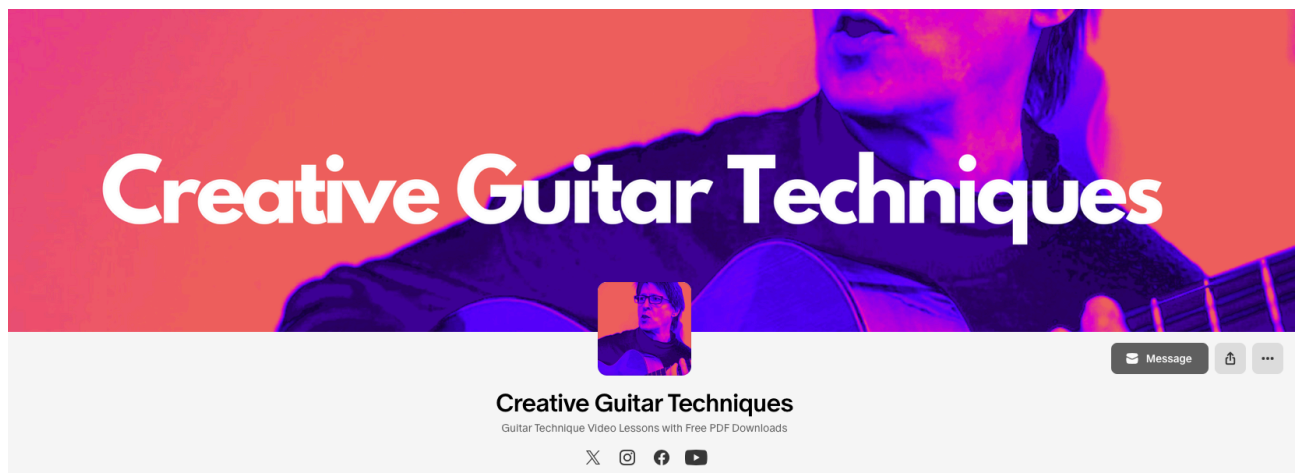
Three chords in G major are shown, each with a treble and bass staff. Fingerings are indicated by numbers 1-4.

Chord	Treble Staff Notes	Bass Staff Notes
G ⁴	G ⁴ (1), B ⁴ (2), D ⁵ (3), E ⁵ (4)	G ² (1), B ² (2), D ³ (3), E ³ (4)
G ³	B ⁴ (1), D ⁵ (2), E ⁵ (3)	G ² (1), B ² (2), D ³ (3)
G ²	B ⁴ (1), D ⁵ (2), E ⁵ (3)	G ² (1), B ² (2), D ³ (3)



Copyright 2025 Clifford Martin

Creative Guitar Techniques Lesson



Feel free to use this book for learning, private teaching and classroom teaching. But, this is **NOT** for resale or free sharing on the internet. Appreciated. Clifford Martin 2025